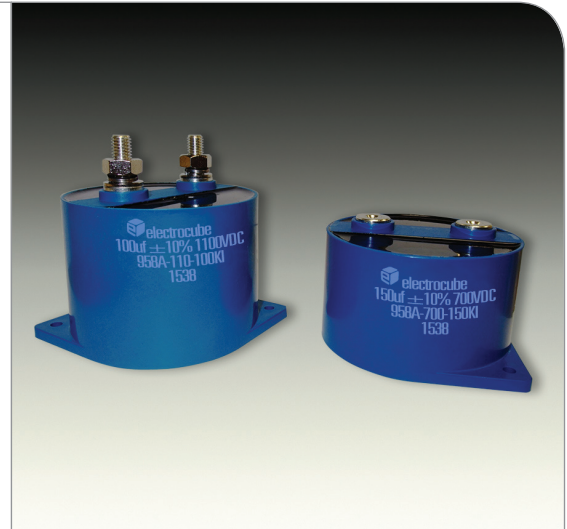
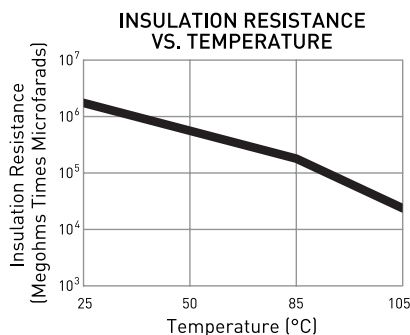
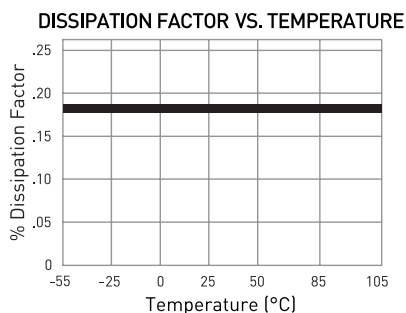
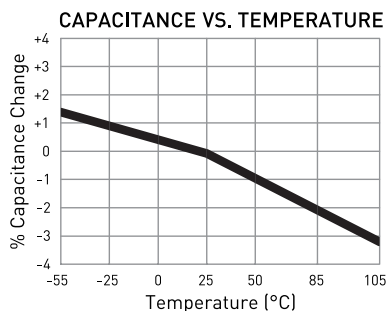


Metallized Polypropylene 958A Film Capacitors

High Current

The Electrocube capacitor 958A series is a rugged, non-inductively wound metallized polypropylene DC Link capacitor. It offers high current and reliability in a high impact polymer case for insulation and durability. It's an excellent replacement for an electrolytic capacitor, providing better reliability with its high current and low ESR. Created with high-grade materials, design and manufacturing, engineers prefer the 958A capacitor series for any high current power inverter applications that require long life under extreme operating conditions such as EV power conversion, aircraft power systems, battery chargers and other high pulse applications.

Typical Dielectric Characteristic Curves



958A Series

Available in threaded insert or terminal studs

Features

- Extended electrode construction
- Tolerances available to $\pm 5\%$, $\pm 10\%$
- Polymer case & dry construction
- Epoxy Resin endfills meet or exceed flammability requirements of UL94V0
- Compliance and certification to worldwide and other environmental standards available upon request; RoHS and Non-RoHS available on most units
- May be used for frequencies up to 100 KHz
- Customizable insulating sleeves, mountings, special terminals, non-standard leads, circuit connections and other hardware
- Assorted styles, ratings and customization for unusual requirements necessitated by special circuit applications [including higher IR or lower DF]

Specifications

Temperature range

- Will withstand -55°C to +85°C at rated voltage

Dielectric voltage test

- Will withstand 150% of DC rated voltage for a period not to exceed 1 minute at temperature of 25°C terminal to terminal
- Current limited to 5 mA
- Will withstand 3 KVAC 50/60 Hz terminal to case at 25°C for 1 minute

DC life test

- Will withstand 140% of DC rated voltage at 85°C for 250 hours with not more than 1 failure in 12 permitted

- Current limited to 5 mA

- Additional life test details available

Life expectancy

- 100,000 hours at rated voltage and 70°C

Dissipation factor

- Will not exceed 0.2% at 25°C

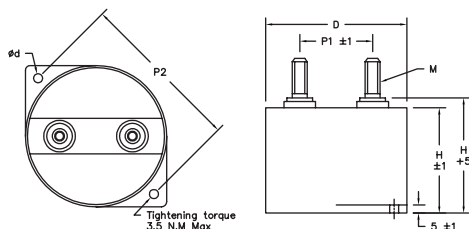
Dielectric absorption

- Will not exceed 0.2% at 25°C per MIL-C-19978

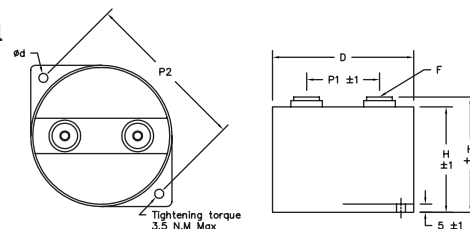
Acceptance criteria

- Measurement frequency for capacitance and dissipation factor will be 120 Hz

Terminal Stud Style



Insert Terminal Style



Terminal Information

CASE CODE	D (MM)	OUTPUT				P1 (MM)	P2 (MM)	D (MM)
		M	TORQUE	F	TORQUE			
A	87	M8-20	8.5 N.M. Max	M6-8	4.5 N.M Max	45	101	5.5
B	115	M10-20	12 N.M. Max	M8-8	8.5 N.M Max	60	133	6.5

	PART NO.	CAP (μF)	D (MM)	H (MM)	LS MAX (NH)	DU/DT (V/μS)	IRMS@5°C @10KHZ (A)	ESR@1.0KHZ (MΩ)	RTH (K/W)
500 VOLTAGE DC	958A-500-125-*A**	125	87	41	25	37	90	0.7	6.8
	958A-500-200-*A**	200	87	51	32	25	90	0.8	5.9
	958A-500-275-*A**	275	87	65	40	16	85	0.9	5.0
	958A-500-350-*B**	350	115	51	32	25	120	0.6	4.1
	958A-500-500-*B**	500	115	65	40	26	125	0.7	3.5
600 VOLTAGE DC	958A-600-100-*A**	100	87	41	25	40	80	0.8	6.8
	958A-600-150-*A**	150	87	51	32	27	80	0.9	5.9
	958A-600-220-*A**	220	87	65	40	18	75	1.1	5.0
	958A-600-300-*B**	300	115	51	32	27	110	0.6	4.1
	958A-600-470-*B**	470	115	65	40	18	120	0.7	3.5
700 VOLTAGE DC	958A-700-100-*A**	100	87	41	25	48	90	0.6	6.8
	958A-700-150-*A**	150	87	51	32	32	90	0.7	5.9
	958A-700-220-*A**	220	87	65	40	21	85	0.9	5.0
	958A-700-250-*B**	250	115	51	32	32	115	0.6	4.1
	958A-700-350-*B**	350	115	65	40	21	120	0.7	3.5
800 VOLTAGE DC	958A-800-68-*A**	68	87	41	25	56	75	0.9	6.8
	958A-800-100-*A**	100	87	51	32	37	75	1.0	5.9
	958A-800-140-*A**	140	87	65	40	25	70	1.3	5.0
	958A-800-200-*B**	200	115	51	32	37	110	0.7	4.1
	958A-800-300-*B**	300	115	65	40	25	120	0.8	3.5
900 VOLTAGE DC	958A-900-68-*A**	68	87	41	25	56	80	0.8	6.8
	958A-900-100-*A**	100	87	51	32	37	80	0.9	5.9
	958A-900-140-*A**	140	87	65	40	25	75	1.2	5.0
	958A-900-200-*B**	200	115	51	32	37	110	0.6	4.1
	958A-900-300-*B**	300	115	65	40	25	115	0.7	3.5
1000 VOLTAGE DC	958A-1000-47-*A**	47	87	41	25	73	70	1.0	6.8
	958A-1000-68-*A**	68	87	51	32	49	70	1.2	5.9
	958A-1000-100-*A**	100	87	65	40	33	65	1.5	5.0
	958A-1000-140-*B**	140	115	51	32	49	105	0.8	4.1
	958A-1000-200-*B**	200	115	65	40	33	110	0.9	3.5

	PART NO.	CAP (μF)	D (MM)	H (MM)	LS MAX (NH)	DU/DT (V/μS)	IRMS@5°C @10KHZ (A)	ESR@1.0KHZ (MΩ)	RTH (K/W)
1100 VOLTAGE DC	958A-1100-47-*A**	47	87	41	25	73	75	0.9	6.8
	958A-1100-68-*A**	68	87	51	32	49	75	1.1	5.9
	958A-1100-100-*A**	100	87	65	40	33	70	1.4	5.0
	958A-1100-125-*B**	125	115	51	32	49	105	0.7	4.1
	958A-1100-180-*B**	180	115	65	40	33	110	0.9	3.5
1200 VOLTAGE DC	958A-1200-25-*A**	25	87	41	25	90	60	1.2	6.8
	958A-1200-35-*A**	35	87	51	32	70	60	1.5	5.9
	958A-1200-50-*A**	50	87	65	40	50	55	2.0	5.0
	958A-1200-60-*B**	60	115	51	32	70	100	1.0	4.1
	958A-1200-80-*B**	80	115	65	40	50	110	1.3	3.5
1500 VOLTAGE DC	958A-1500-18-*A**	18	87	41	25	113	55	1.2	6.8
	958A-1500-25-*A**	25	87	51	32	85	55	1.7	5.9
	958A-1500-35-*A**	35	87	65	40	60	50	2.2	5.0
	958A-1500-47-*B**	47	115	51	32	85	100	1.1	4.1
	958A-1500-68-*B**	68	115	65	40	60	105	1.3	3.5
1800 VOLTAGE DC	958A-1800-10-*A**	10	87	41	25	175	50	1.5	6.8
	958A-1800-15-*A**	15	87	51	32	120	50	2.0	5.9
	958A-1800-22-*A**	22	87	65	40	80	45	2.5	5.0
	958A-1800-25-*B**	25	115	51	32	120	90	1.4	4.1
	958A-1800-35-*B**	35	115	65	40	80	100	1.8	3.5
2000 VOLTAGE DC	958A-2000-6.8-*A**	6.8	87	41	25	200	50	1.7	6.8
	958A-2000-10-*A**	10	87	51	32	150	50	2.3	5.9
	958A-2000-15-*A**	15	87	65	40	100	45	2.9	5.0
	958A-2000-18-*B**	18	115	51	32	150	90	1.5	4.1
	958A-2000-25-*B**	25	115	65	40	100	100	2.0	3.5

* M or F

** Add tolerance designator to complete part number: J = ±5%, K = ±10%

For questions and/or a quote, contact Sales at 909-595-4037 or info@electrocube.com.



Founded in 1961, Electrocube is one of the most respected design manufacturers of passive electrical components – film capacitors, RC Networks, EMI Filters and foil transformers – for a wide range of standard and custom applications in the aerospace, audio, elevator, heavy equipment industries and more. Electrocube's hallmark is its clear understanding of the challenges faced by design engineers and purchasing agents. www.electrocube.com